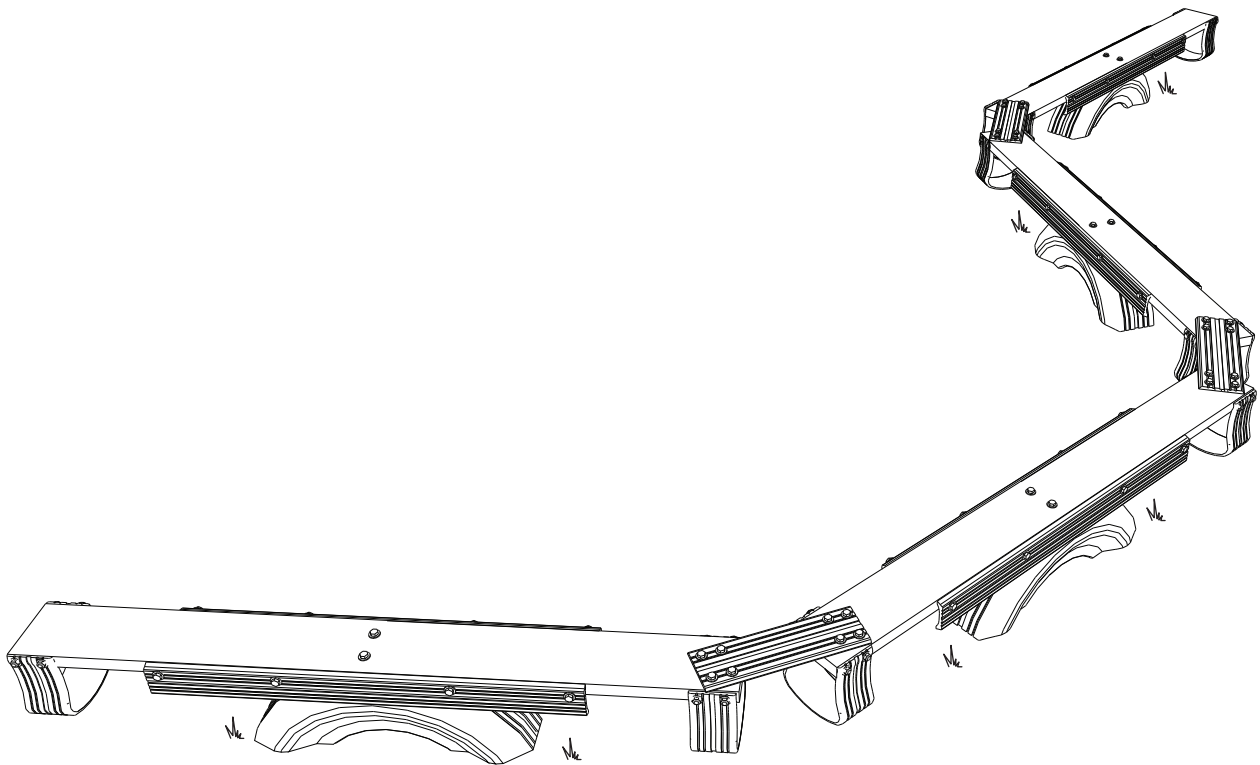




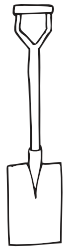
**PLAYGROUND
IDEAS**

BALANCE SEESAW HYBRID

Instructions Author: Socheata Kong



www.playgroundideas.org



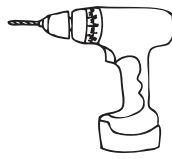
Spade



Spanner



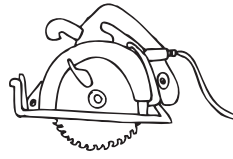
Utility Knife



Drill



Grinder



Circular Saw



Planer

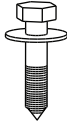


Water



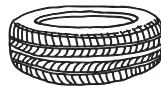
x32

Hex Bolt



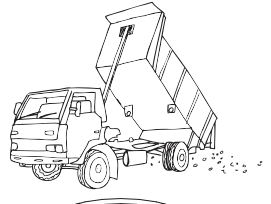
x64

Lag Screw



Car Tire

x9



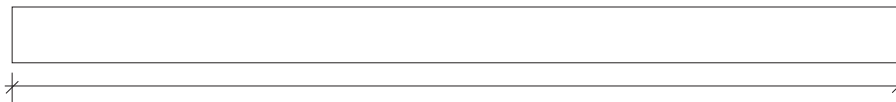
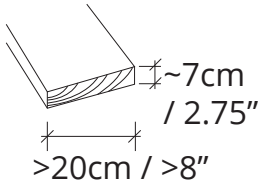
Truck Tire

x4



Paint & Brush

WOOD



x4

Please note: All measurements are indicative only. Measurements need to be adjusted according to context, available materials, tools, and local construction methods.



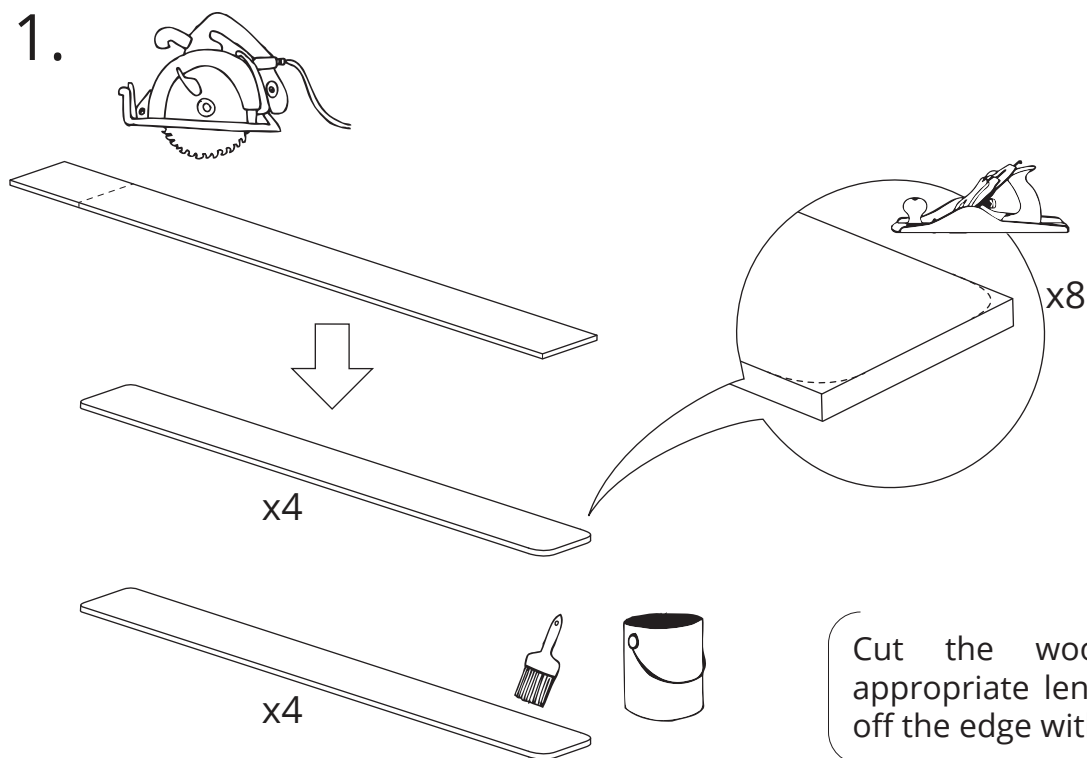
This step-by-step playground plan is offered for support, guidance and advice only and should not be relied upon in place of professional or expert advice. We make no representation or warranty of any kind, express or implied, about the completeness, accuracy, reliability or suitability with respect to the step-by-step playground plan. Further, Playground Ideas make no representation that this step-by-step playground plan adheres to any safety standards in your country and therefore each project/playground built should be assessed on an individual basis in order to ensure compliance with national safety standards in the applicable country. To the maximum extent permitted by law, in no event will Playground Ideas be liable for any loss or damage including without limitation, direct, indirect or consequential loss or damage, loss of profits or loss of opportunity arising out of or in any way connected with the any person

acting or refraining from acting in reliance of the step-by-step playground plan or for failure to comply with the national safety standards in the applicable country, whether based in contract, tort (including negligence), strict liability or otherwise.

This work is licensed under the Creative Commons Attribution-NonCommercial-NoDerivs 3.0 Unported License. This means if you use or feature this work in any website, publication, presentation etc, you must clearly attribute/ credit the work to www.playgroundideas.org (but not in any way that suggests that PlaygroundIDEAS endorses you or your use of the work). You may not use this work for commercial purposes without explicit permission. You may not alter, transform, or build upon this work but you may create and add new work to the PlaygroundIDEAS design library to share. To view a copy of this license, visit: <http://creativecommons.org/licenses/by-nc-nd/3.0/>.

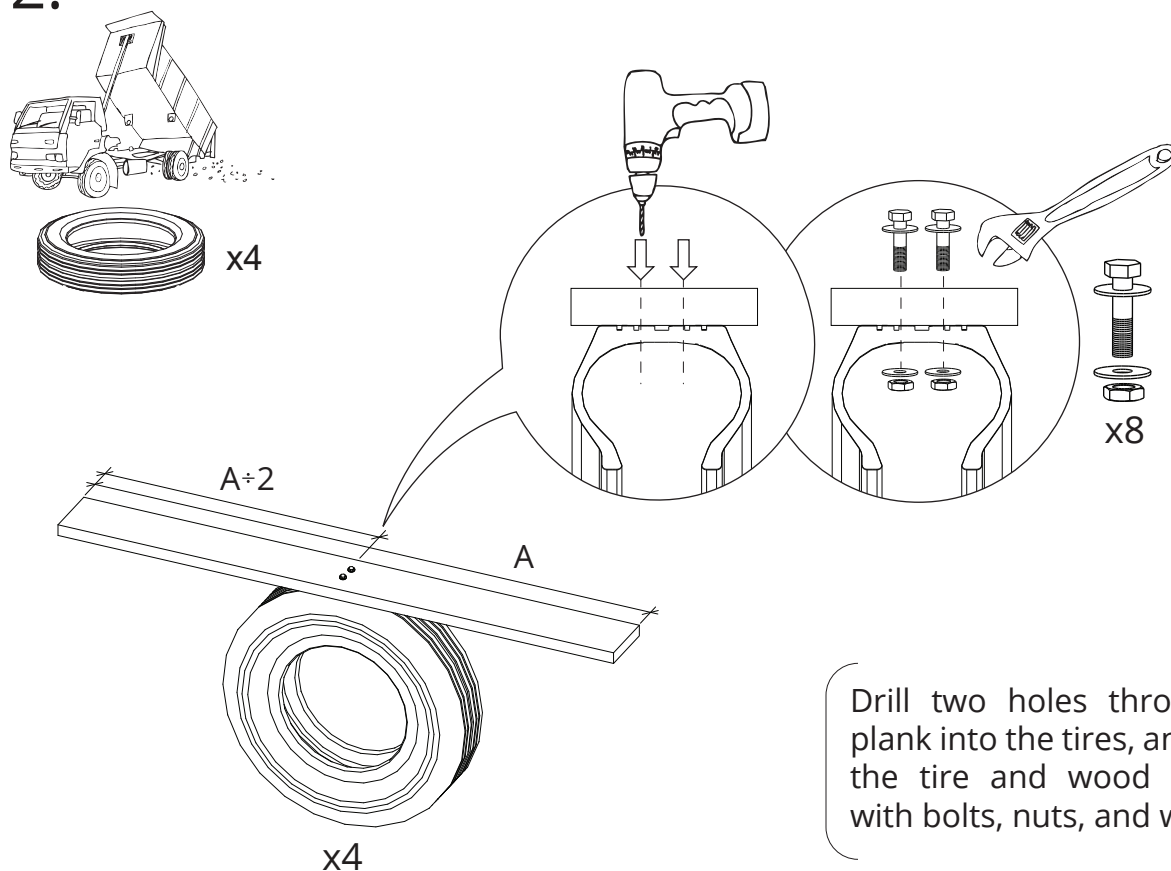


1.



Cut the wood plank to the appropriate length, and then round off the edge with a planer.

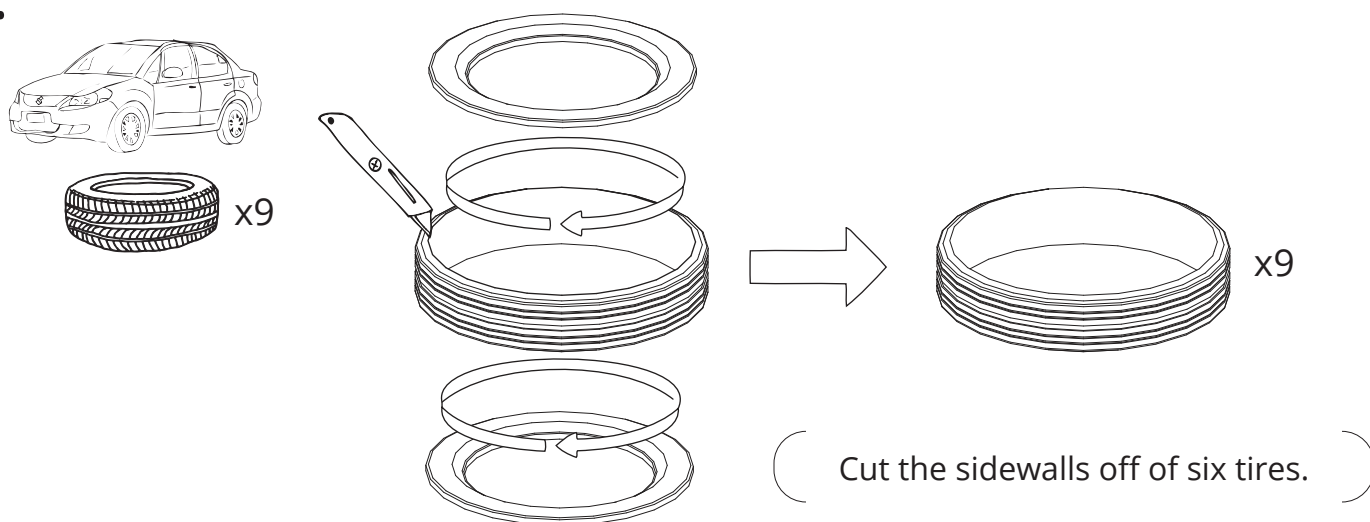
2.



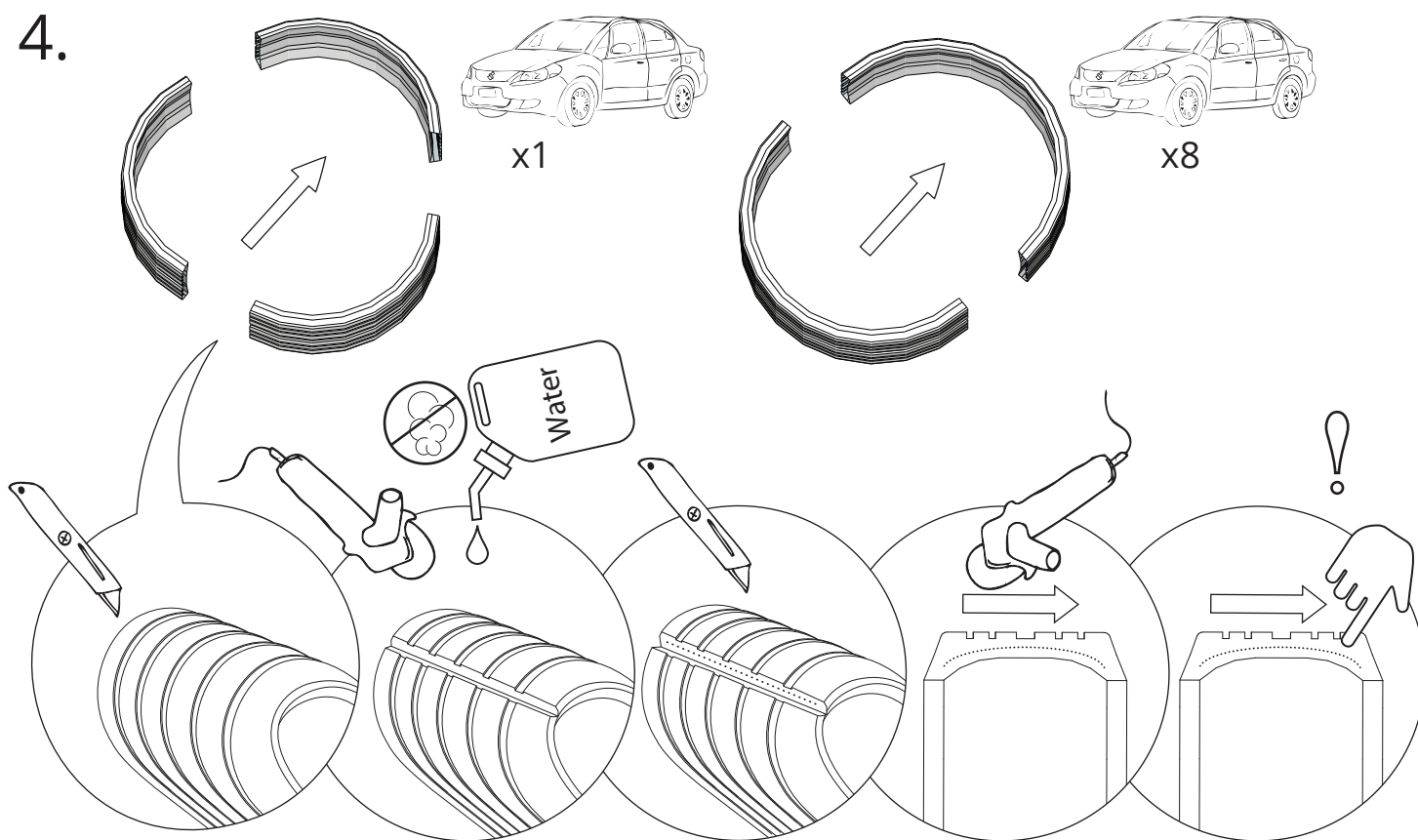
Drill two holes through the wood plank into the tires, and then connect the tire and wood plank together with bolts, nuts, and washers.



3.



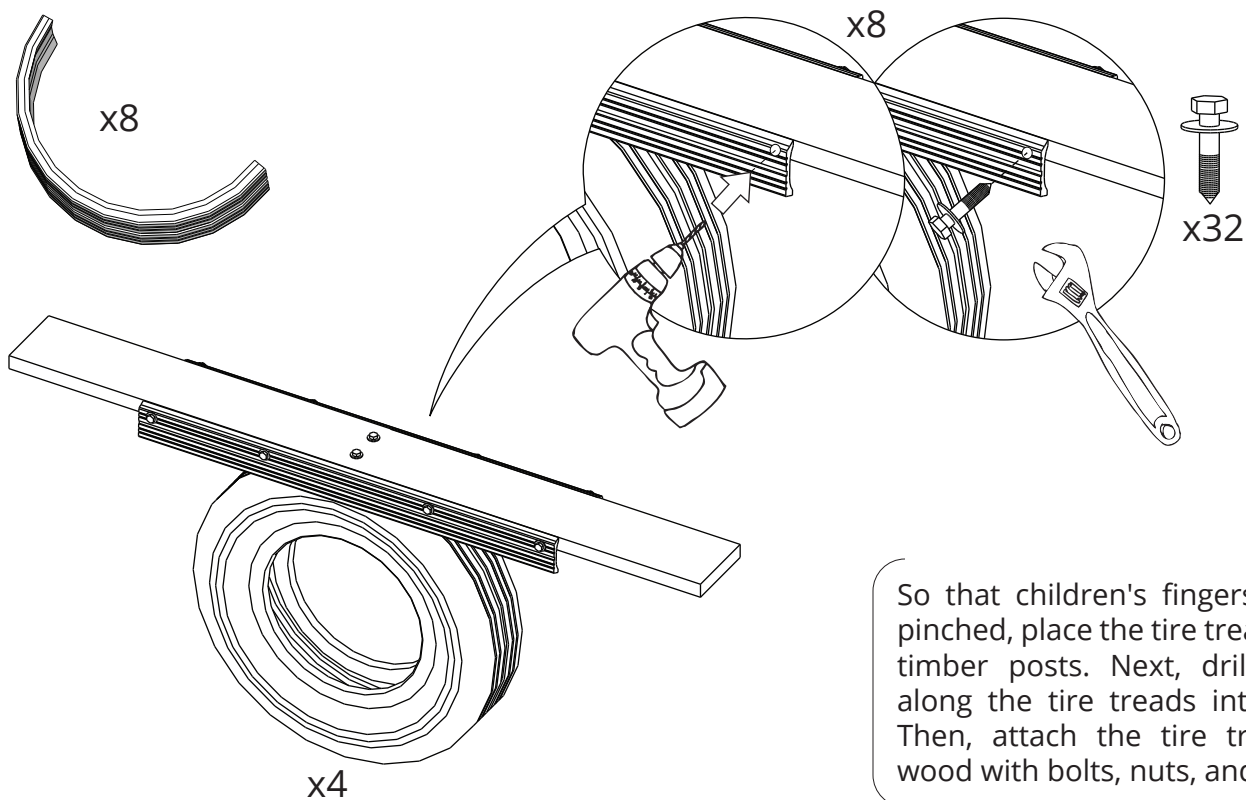
4.



Cut through the tire tread. First, use a utility knife to cut the rubber of the tire tread until you reach the steel wire. Next, use a thin metal blade grinder to cut through the steel wire. Then, cut the rest of the rubber with the utility knife. Finally, use a thick grinder blade to smooth the surface. Run your finger along the surface of the cut to make sure it is smooth.

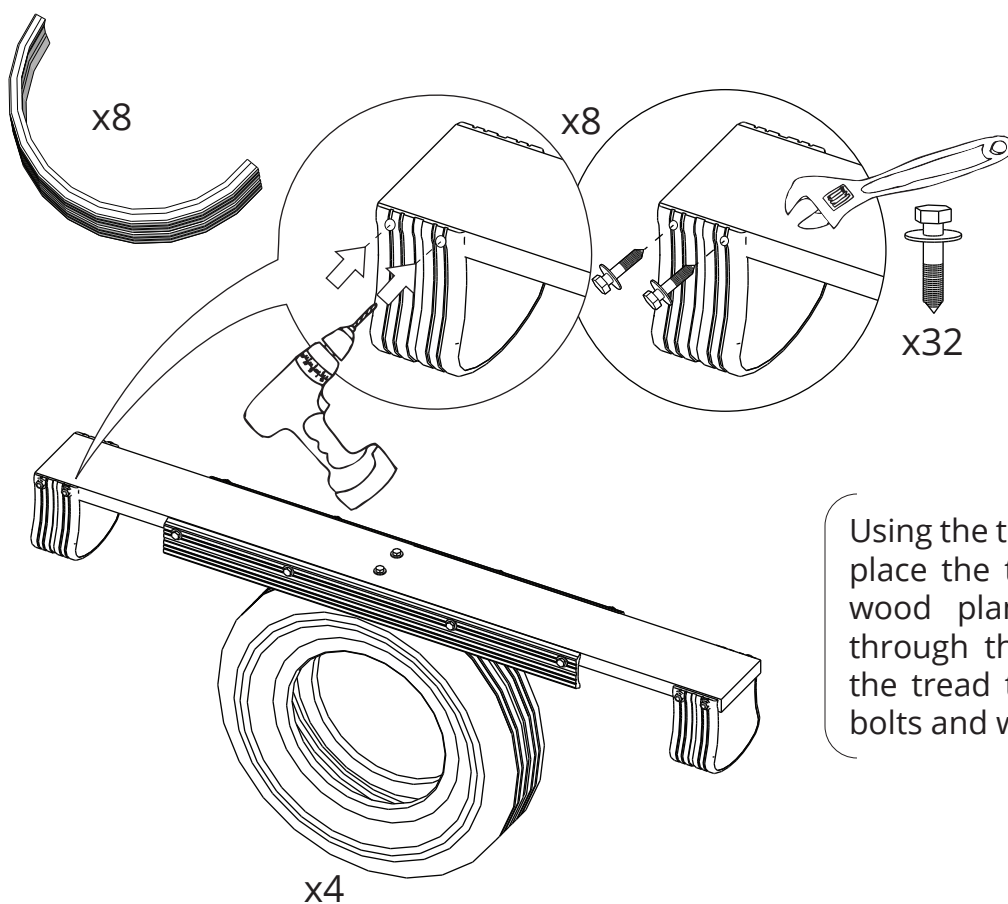


5.



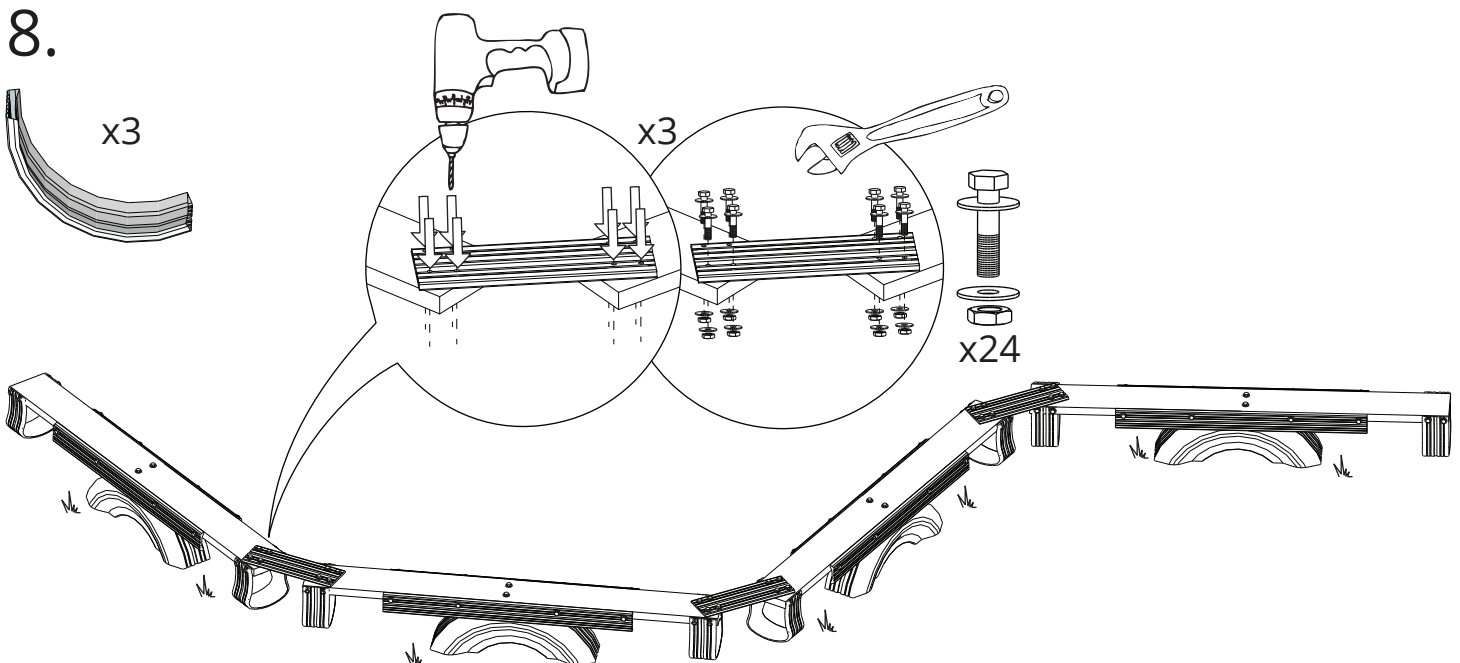
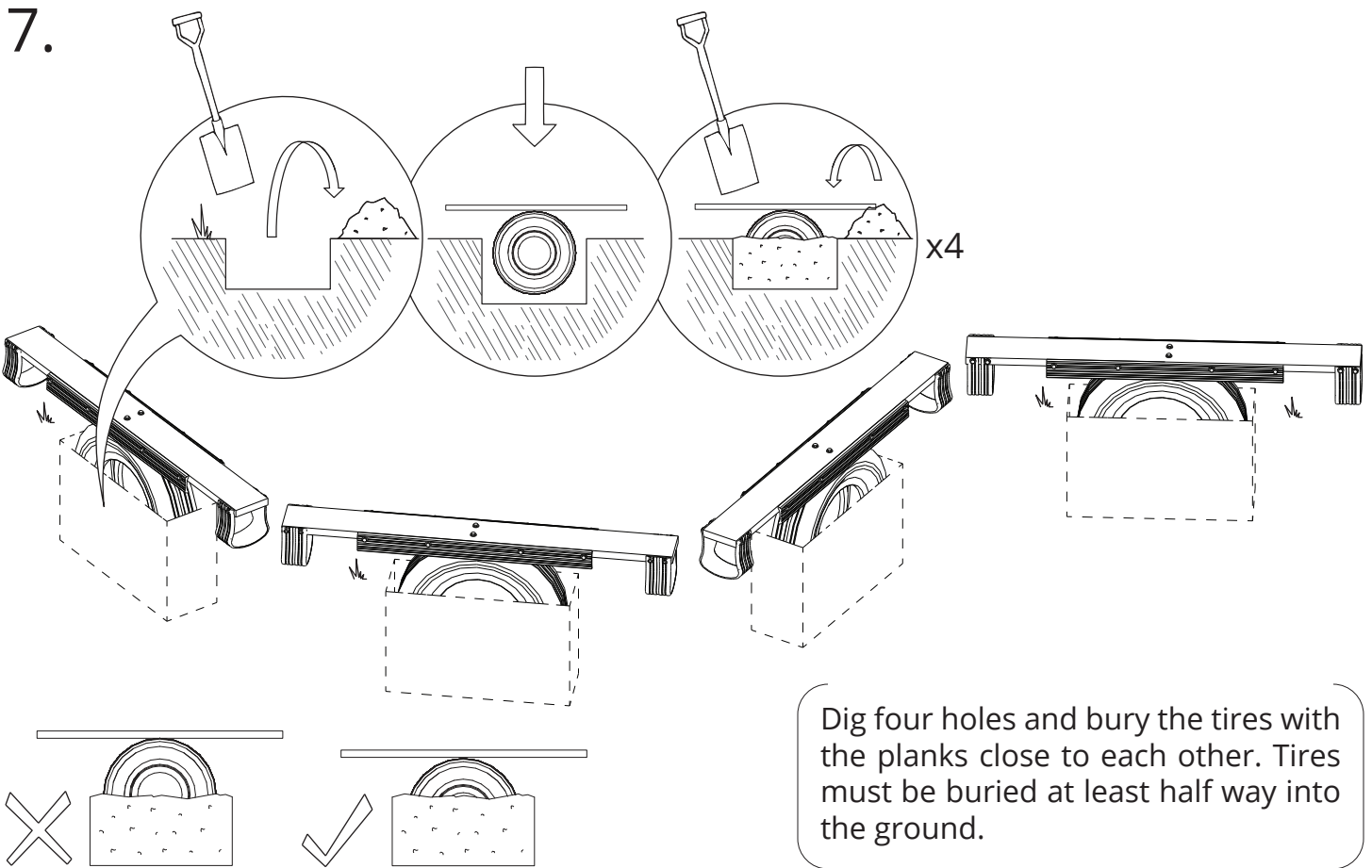
So that children's fingers do not get pinched, place the tire treads along the timber posts. Next, drill four holes along the tire treads into the wood. Then, attach the tire treads to the wood with bolts, nuts, and washers.

6.



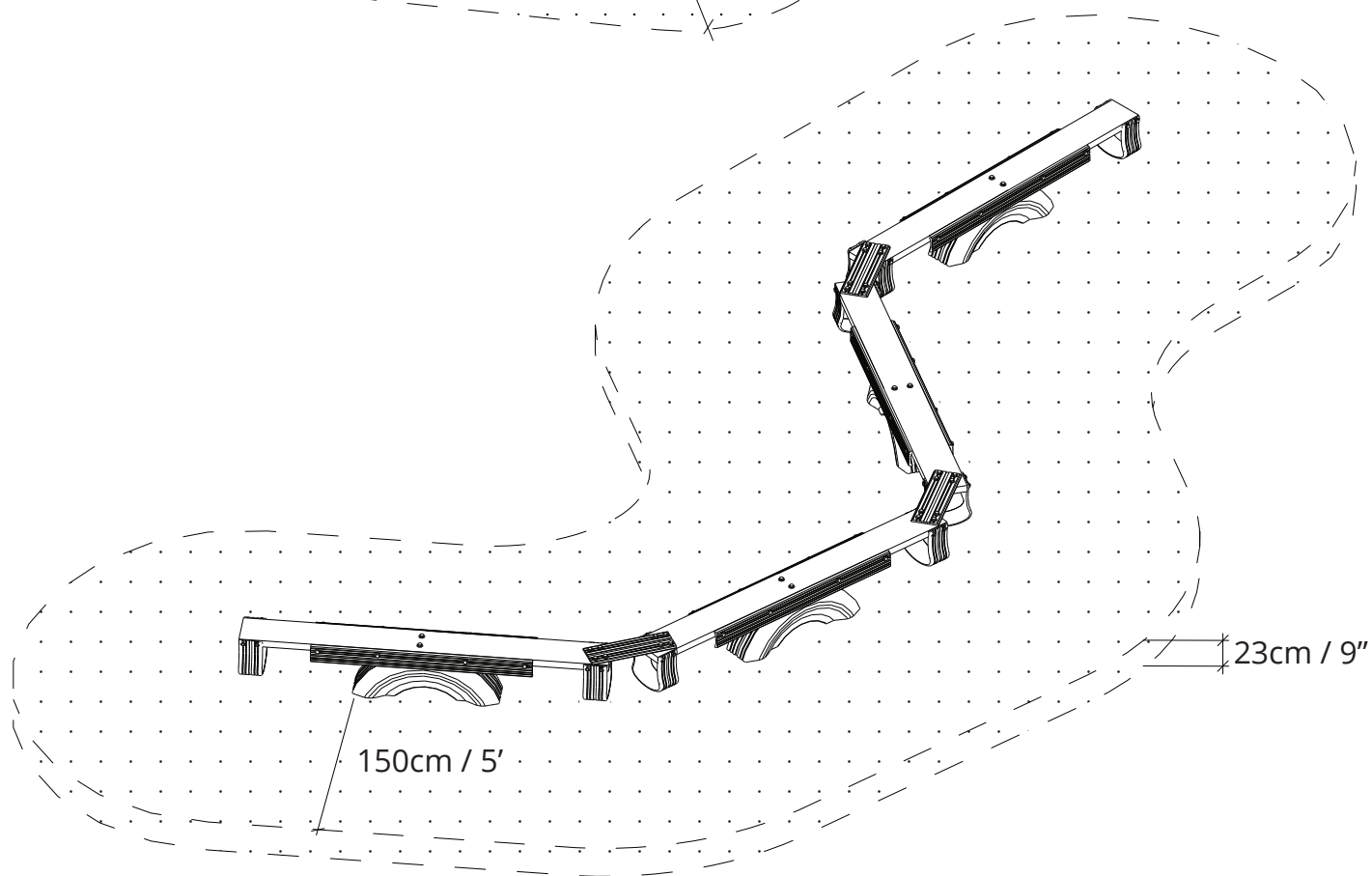
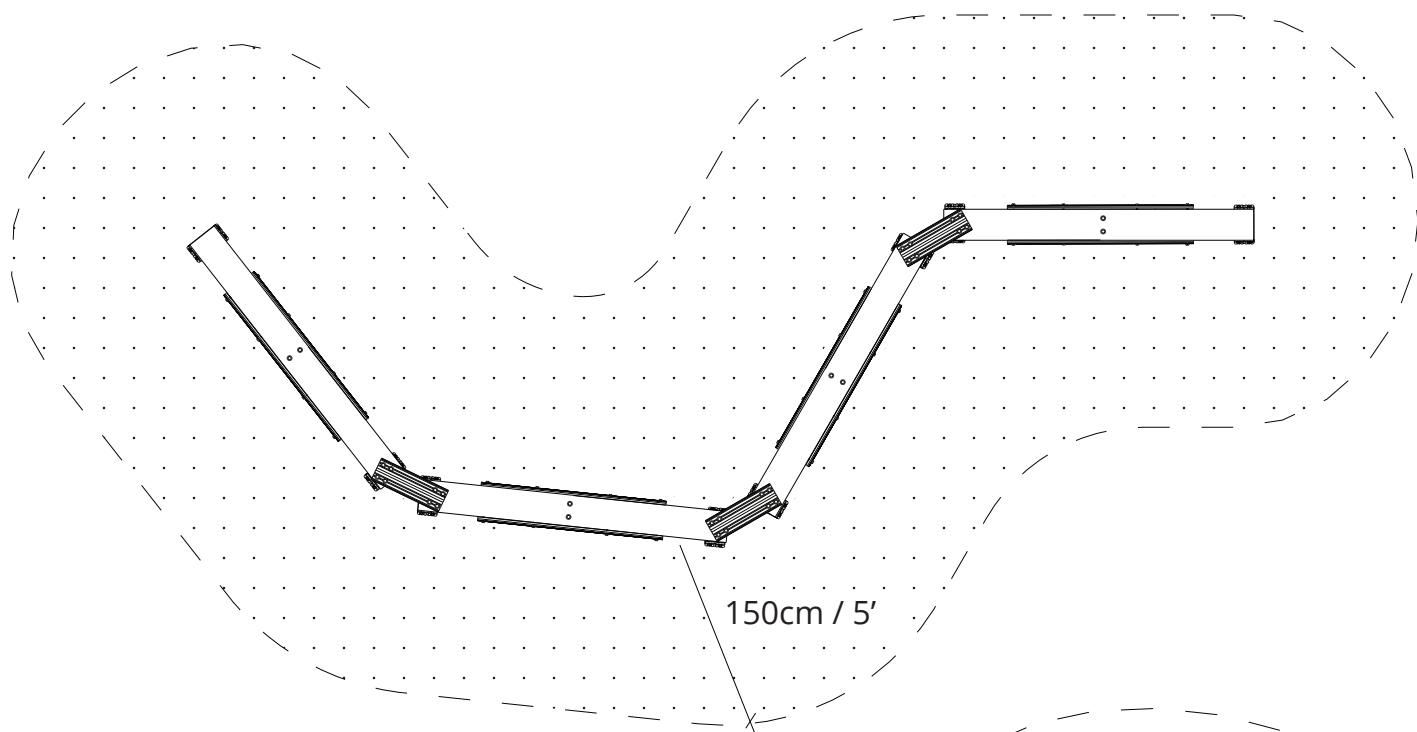
Using the tire tread that was cut in half, place the tread along the side of the wood plank. Next, drill four holes through the tire treads. Then, attach the tread to the wood plank with lag bolts and washers.





Place a cut tire tread over two wood planks. Next, drill four holes through the tire tread and wood plank. Then, attach the tire tread and wood plank with bolts, nuts, and washers.

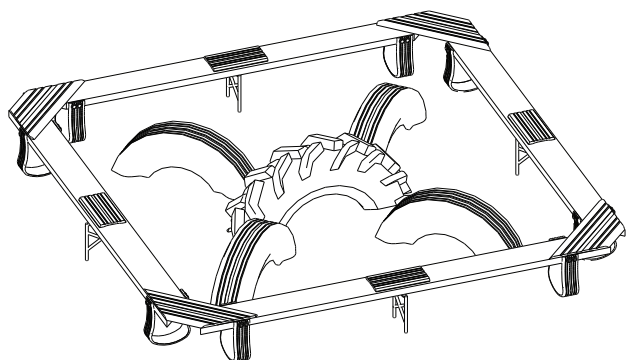




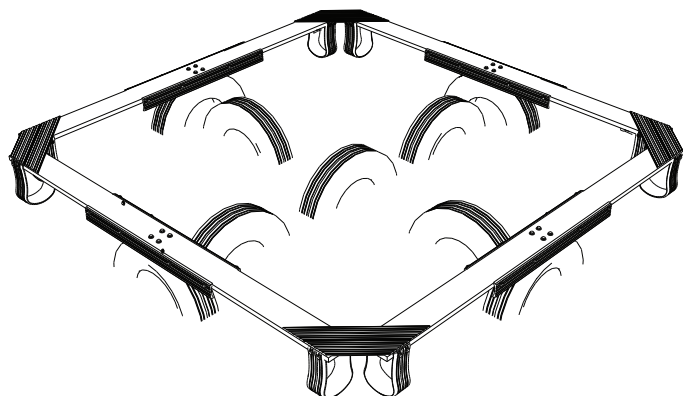
This element requires soft fall material and cannot overlap with other elements. Please refer to the Playground Ideas Safety Handbook.



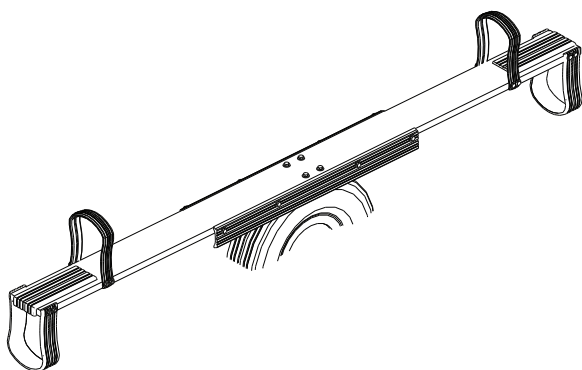
If you like this Balance Seesaw Hybrid, please check out these elements below as well:



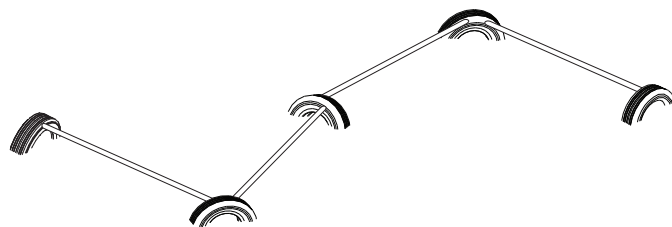
Seesaw 4 Way



Seesaw 4 Way
Mega



Seesaw Single 1
Tire



Balance Beams
Extended

