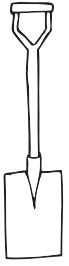


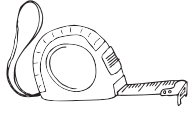
HALF TIRE SQUARE

Instructions Author: Socheata Kong

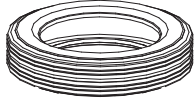
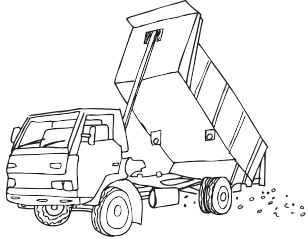




Spade



Tape Measure



x21

Truck Tire

*This element can be as large or small as you like.

Please note: All measurements are indicative only. Measurements need to be adjusted according to context, available materials, tools, and local construction methods.



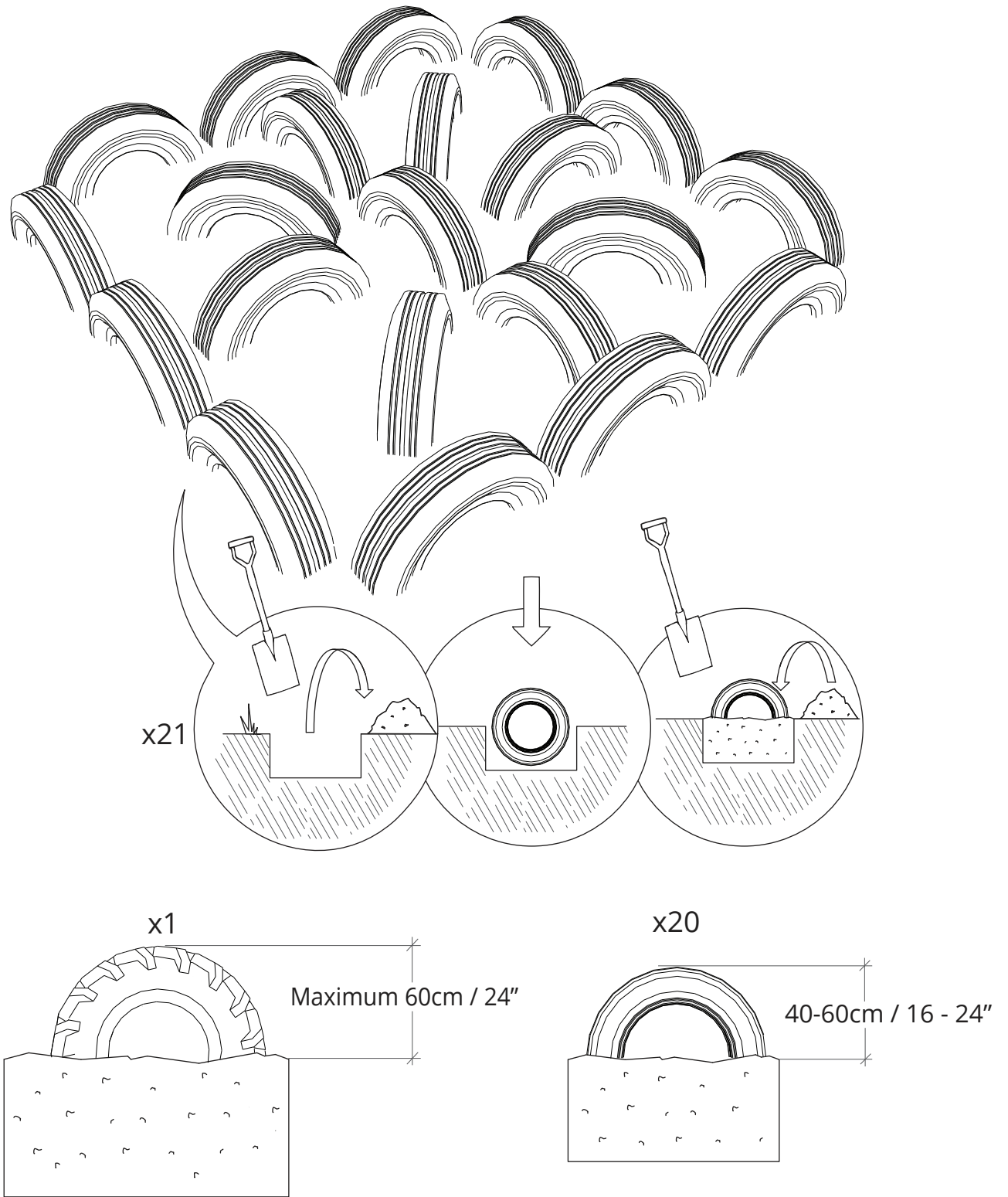
This step-by-step playground plan is offered for support, guidance and advice only and should not be relied upon in place of professional or expert advice. We make no representation or warranty of any kind, express or implied, about the completeness, accuracy, reliability or suitability with respect to the step-by-step playground plan. Further, Playground Ideas make no representation that this step-by-step playground plan adhere to any safety standards in your country and therefore each project/playground built should be assessed on an individual basis in order to ensure compliance with national safety standards in the applicable country. To the maximum extent permitted by law, in no event will Playground Ideas be liable for any loss or damage including without limitation, direct, indirect or consequential loss or damage, loss of profits or loss of opportunity arising out of or in any way connected with the any person

acting or refraining from acting in reliance of the step-by-step playground plan or for failure to comply with the national safety standards in the applicable country, whether based in contract, tort (including negligence), strict liability or otherwise.

This work is licensed under the Creative Commons Attribution-NonCommercial-NoDerivs 3.0 Unported License. This means if you use or feature this work in any website, publication, presentation etc, you must clearly attribute/ credit the work to www.playgroundideas.org (but not in any way that suggests that PlaygroundIDEAS endorses you or your use of the work). You may not use this work for commercial purposes without explicit permission. You may not alter, transform, or build upon this work but you may create and add new work to the Playground-IDEAS design library to share. To view a copy of this license, visit: <http://creativecommons.org/licenses/by-nc-nd/3.0/>.

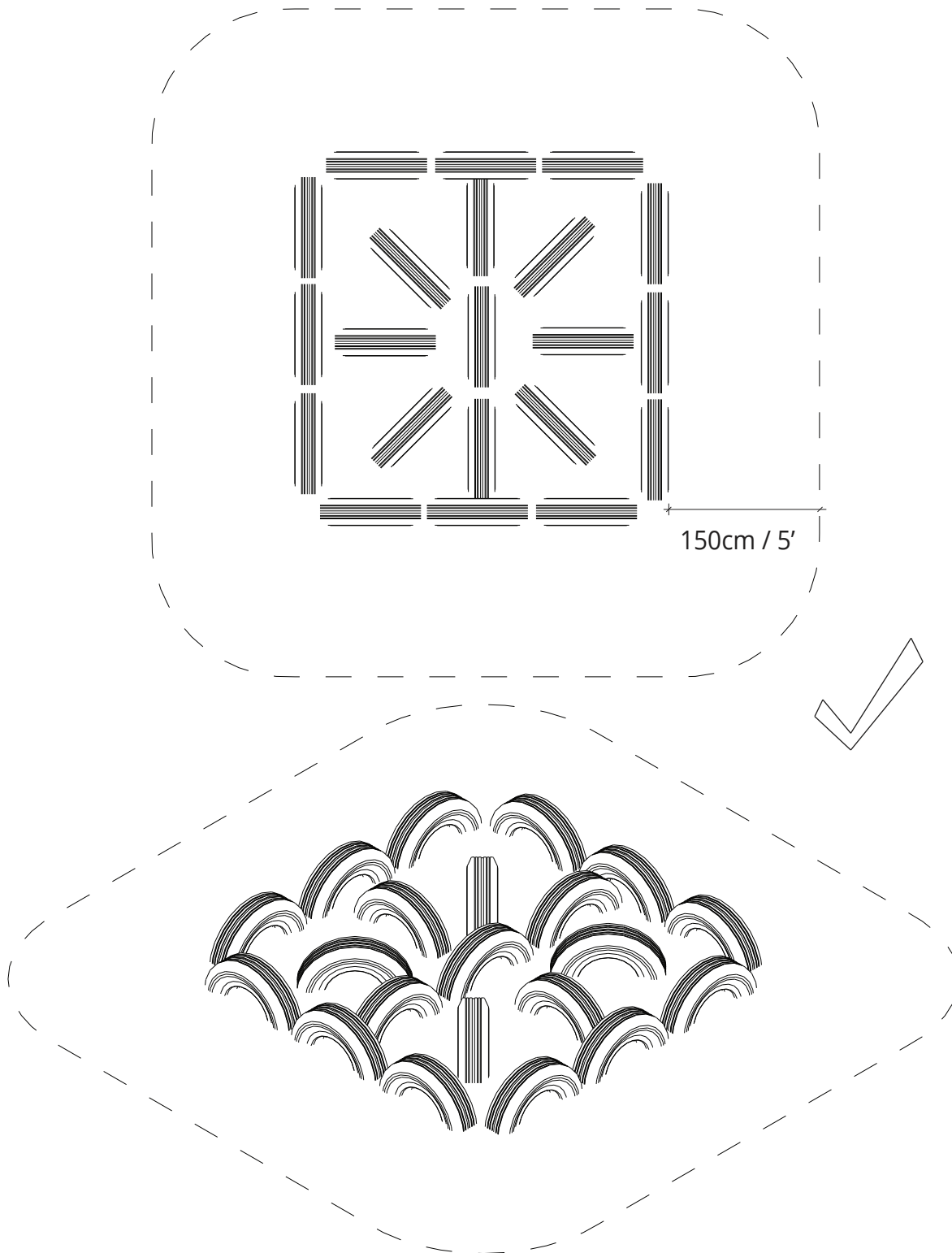


1.



Bury the tires in a square formation. All tires must be buried at least half way into the earth to better secure the tires.

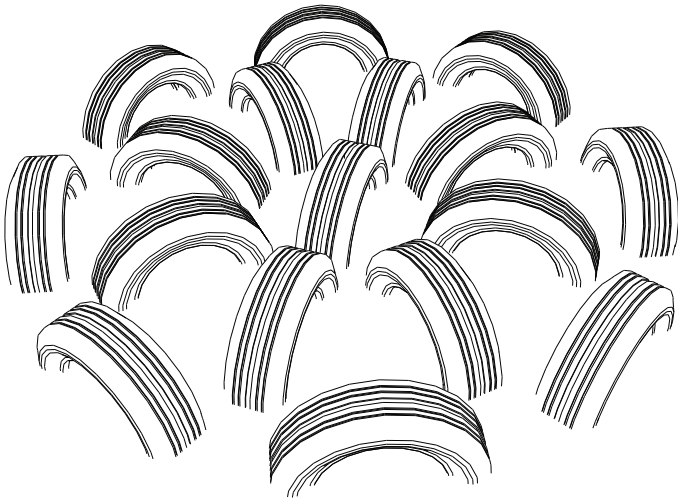




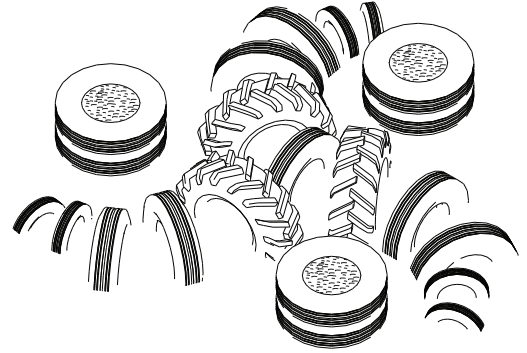
This element does not require soft fall material and can overlap with other elements. Please refer to the Playground Ideas Safety Handbook.



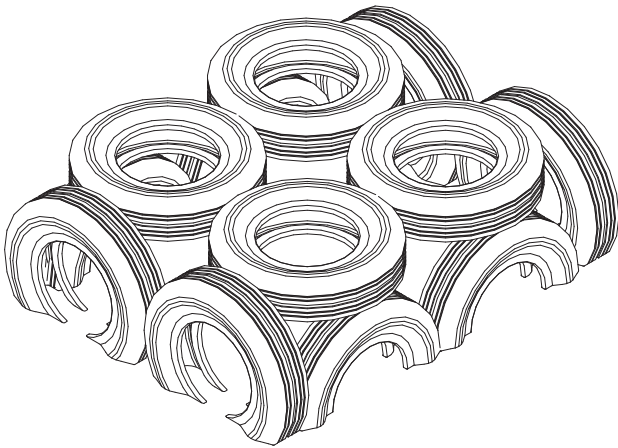
If you like this Half Tire Square, please check out these elements below as well:



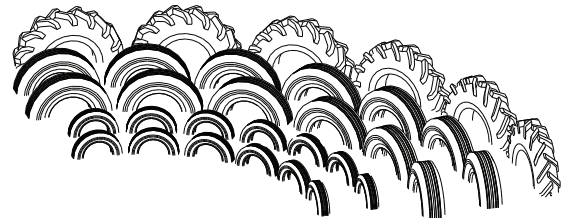
Half Tire Circle



Triple Shrimp



Cube Climber
Nursery



Amphitheater
Tire

