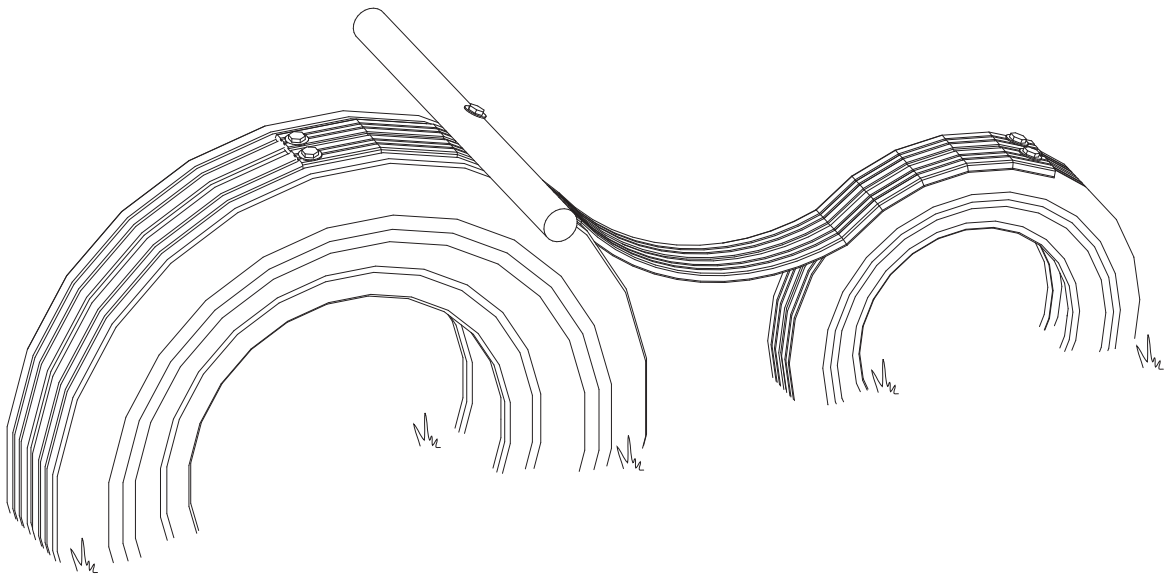




**PLAYGROUND
IDEAS**

MOTORBIKE

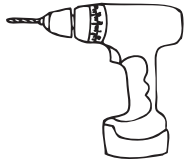
Instructions Author: Socheata Kong



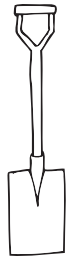
www.playgroundideas.org



Utility Knife



Drill



Spade



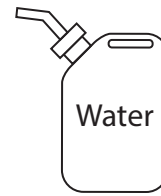
Spanner



Machete



Grinder

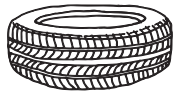


Water



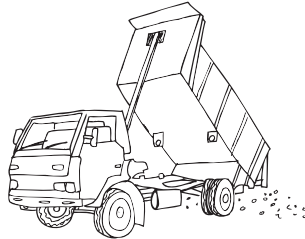
x5

Hex Bolt



x2

Car Tire



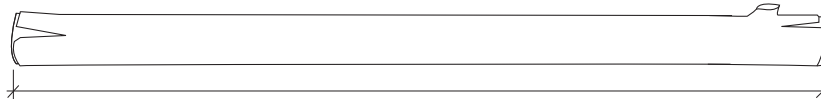
x1

Truck Tire

TIMBER



~4cm / 2"



~90cm / 35.5"

x1

Please note: All measurements are indicative only. Measurements need to be adjusted according to context, available materials, tools, and local construction methods.



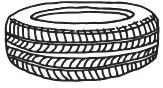
This step-by-step playground plan is offered for support, guidance and advice only and should not be relied upon in place of professional or expert advice. We make no representation or warranty of any kind, express or implied, about the completeness, accuracy, reliability or suitability with respect to the step-by-step playground plan. Further, Playground Ideas make no representation that this step-by-step playground plan adhere to any safety standards in your country and therefore each project/playground built should be assessed on an individual basis in order to ensure compliance with national safety standards in the applicable country. To the maximum extent permitted by law, in no event will Playground Ideas be liable for any loss or damage including without limitation, direct, indirect or consequential loss or damage, loss of profits or loss of opportunity arising out of or in any way connected with the any person

acting or refraining from acting in reliance of the step-by-step playground plan or for failure to comply with the national safety standards in the applicable country, whether based in contract, tort (including negligence), strict liability or otherwise.

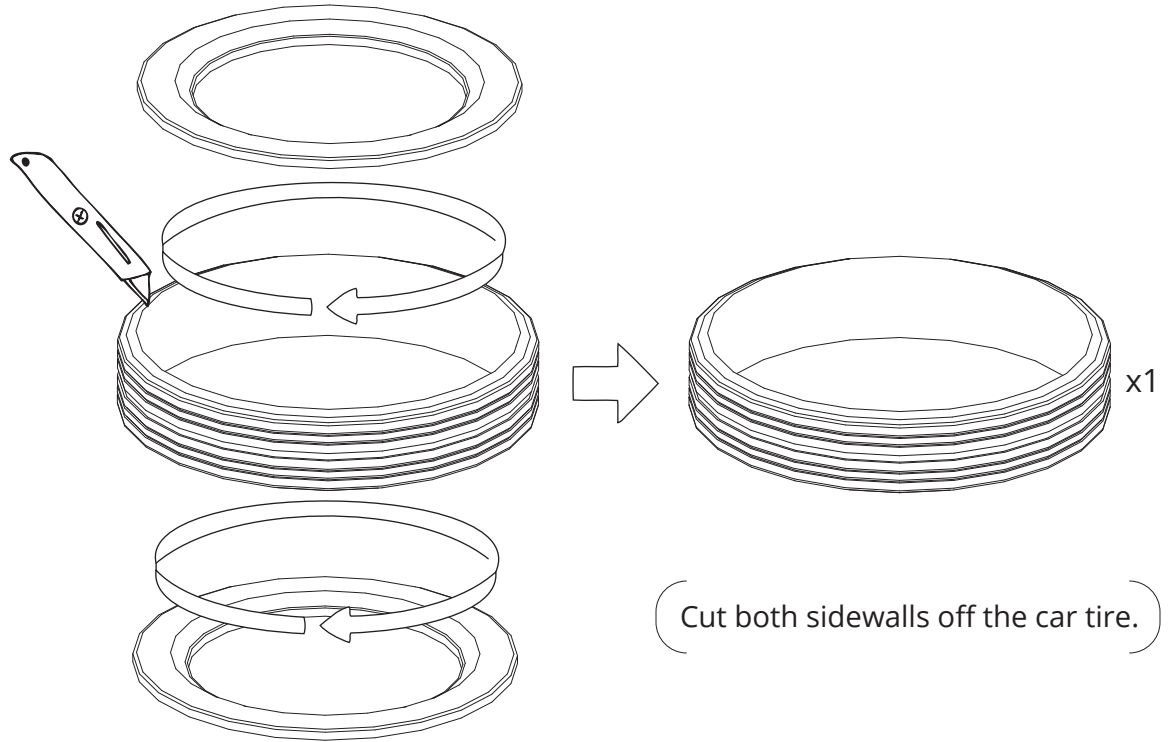
This work is licensed under the Creative Commons Attribution-NonCommercial-NoDerivs 3.0 Unported License. This means if you use or feature this work in any website, publication, presentation etc, you must clearly attribute/ credit the work to www.playgroundideas.org (but not in any way that suggests that PlaygroundIDEAS endorses you or your use of the work). You may not use this work for commercial purposes without explicit permission. You may not alter, transform, or build upon this work but you may create and add new work to the Playground-IDEAS design library to share. To view a copy of this license, visit: <http://creativecommons.org/licenses/by-nc-nd/3.0/>.



1.

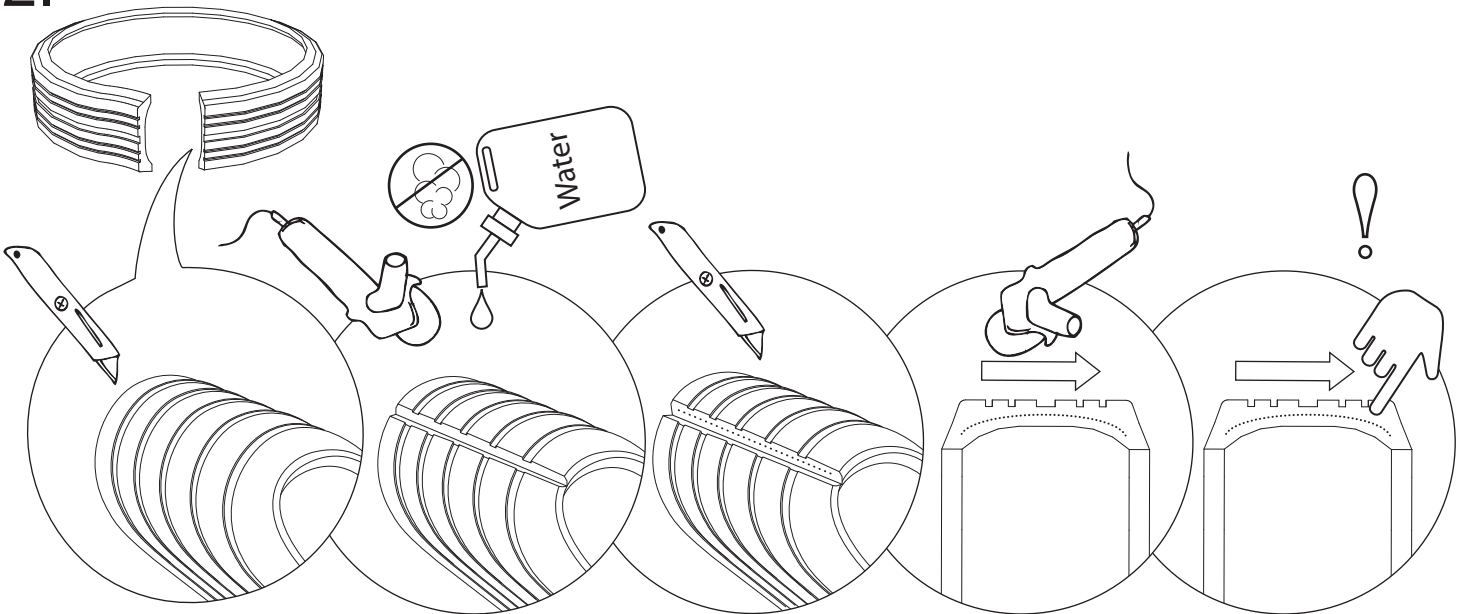


x1



(Cut both sidewalls off the car tire.)

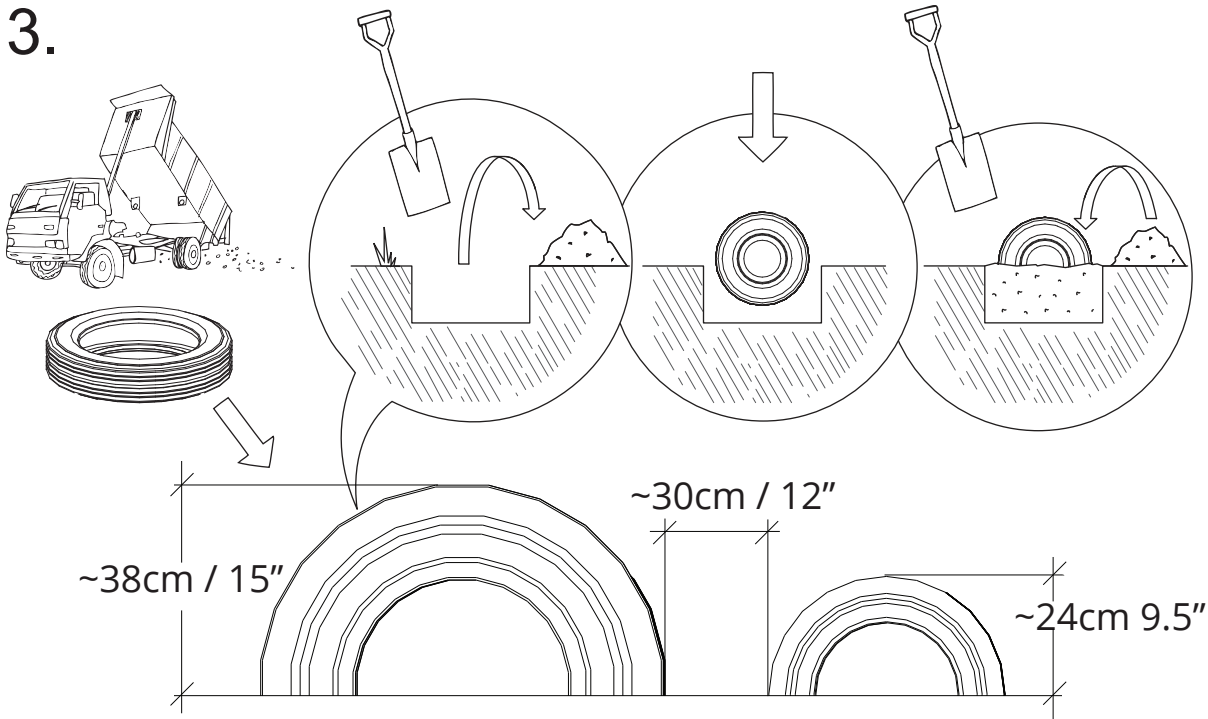
2.



Cut through the tire tread. First, use a utility knife to cut the rubber of the tire tread until you reach the steel wire. Next, use a thin metal blade grinder to cut through the steel wire. Then, cut the rest of the rubber with the utility knife. Finally, use a thick grinder blade to smooth the surface. Run your finger along the surface of the cut to make sure it is smooth.

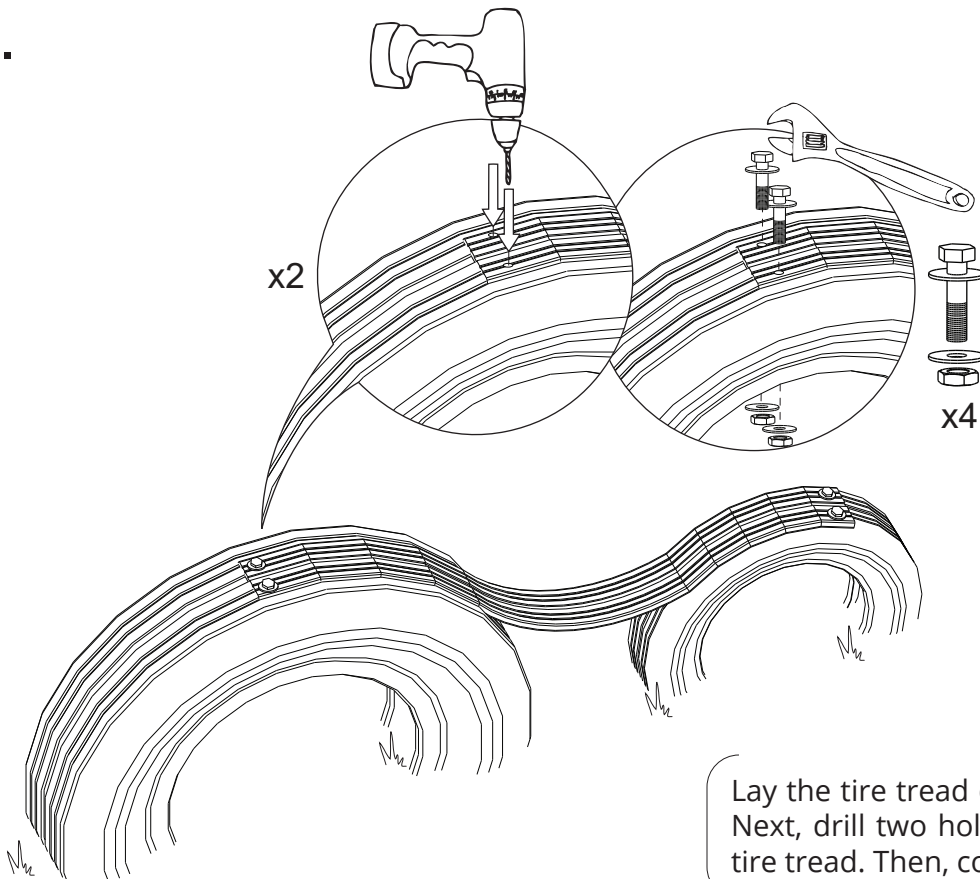


3.



Bury the truck tire and car tire into the ground. Tires must be buried at least half way into the ground to better secure the tires.

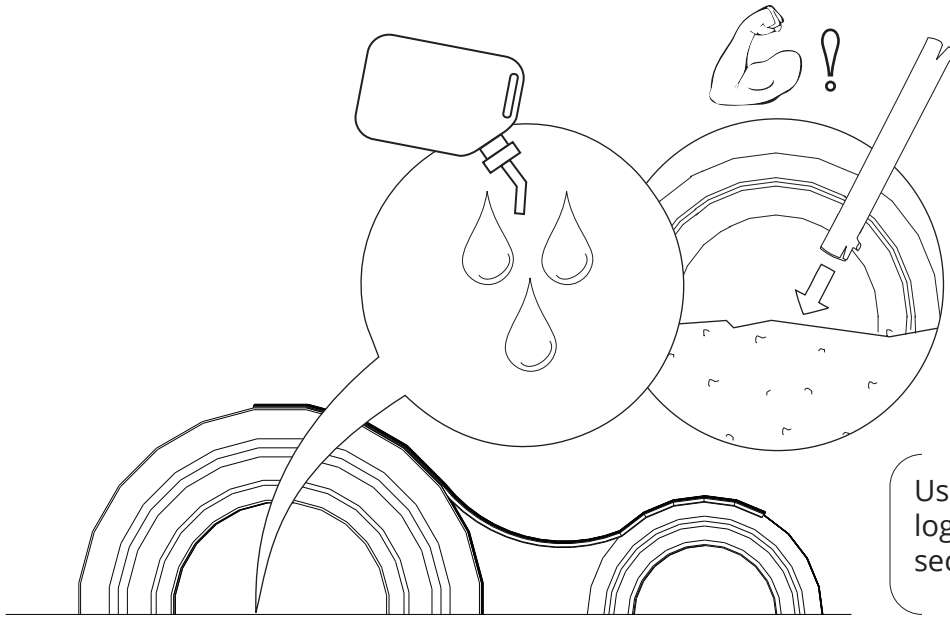
4.



Lay the tire tread on the car tire and truck tire. Next, drill two holes through each ends of the tire tread. Then, connect them with hex bolts.

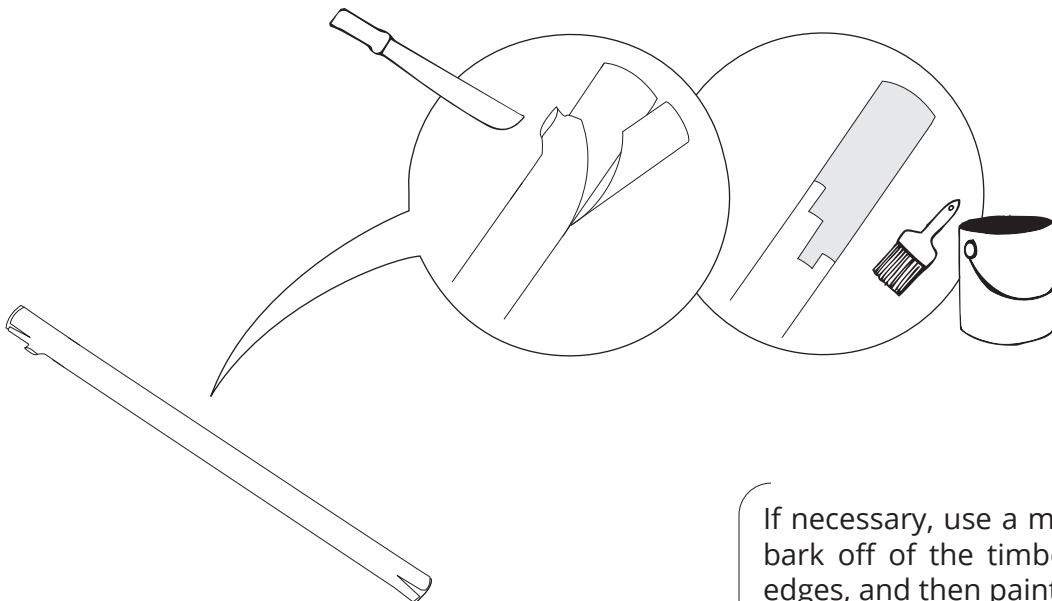


5.



Use water on the soil and a heavy log to pack the soil down to better secure the tires.

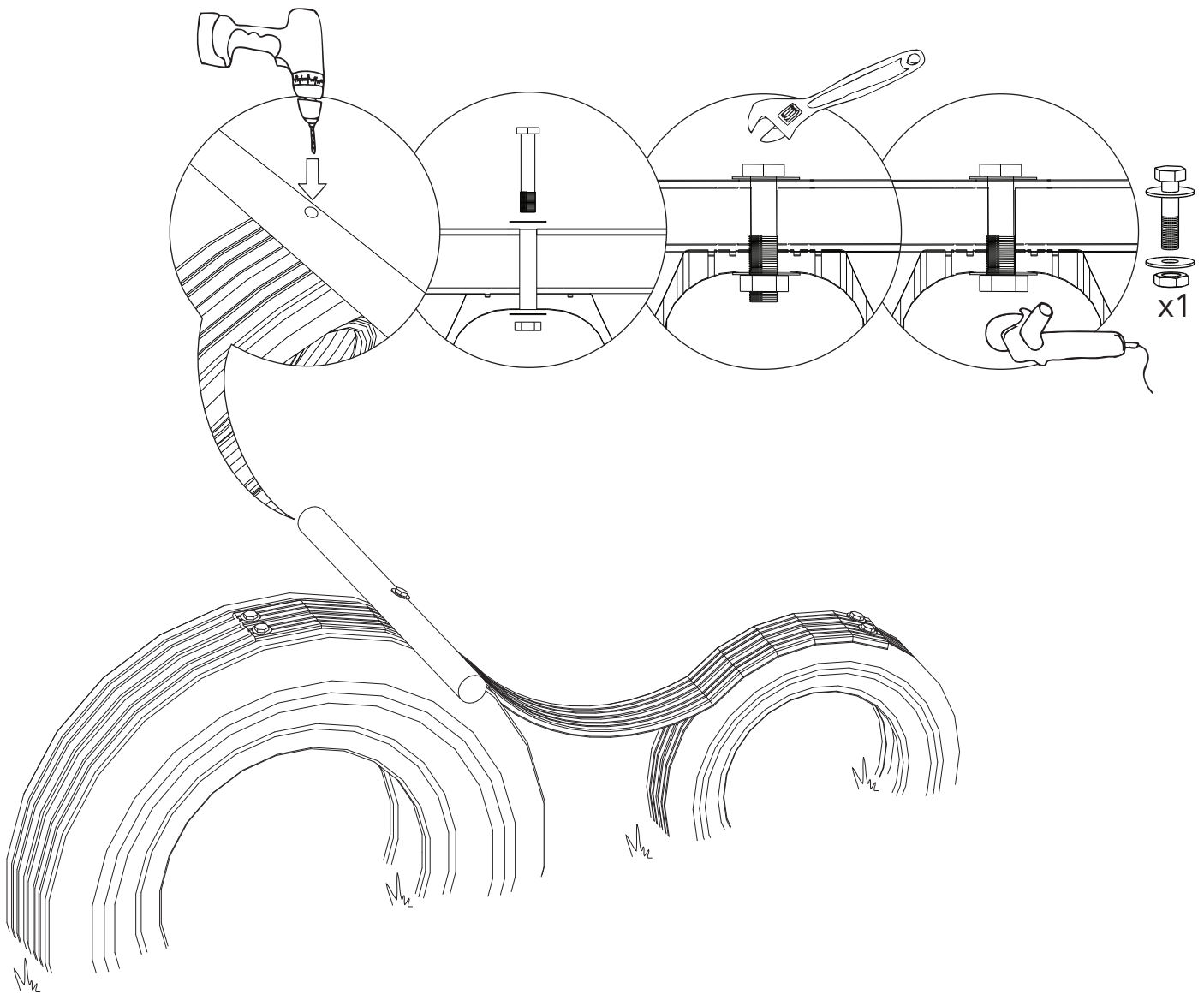
6.



If necessary, use a machete to cut the bark off of the timber, round off the edges, and then paint the timber.



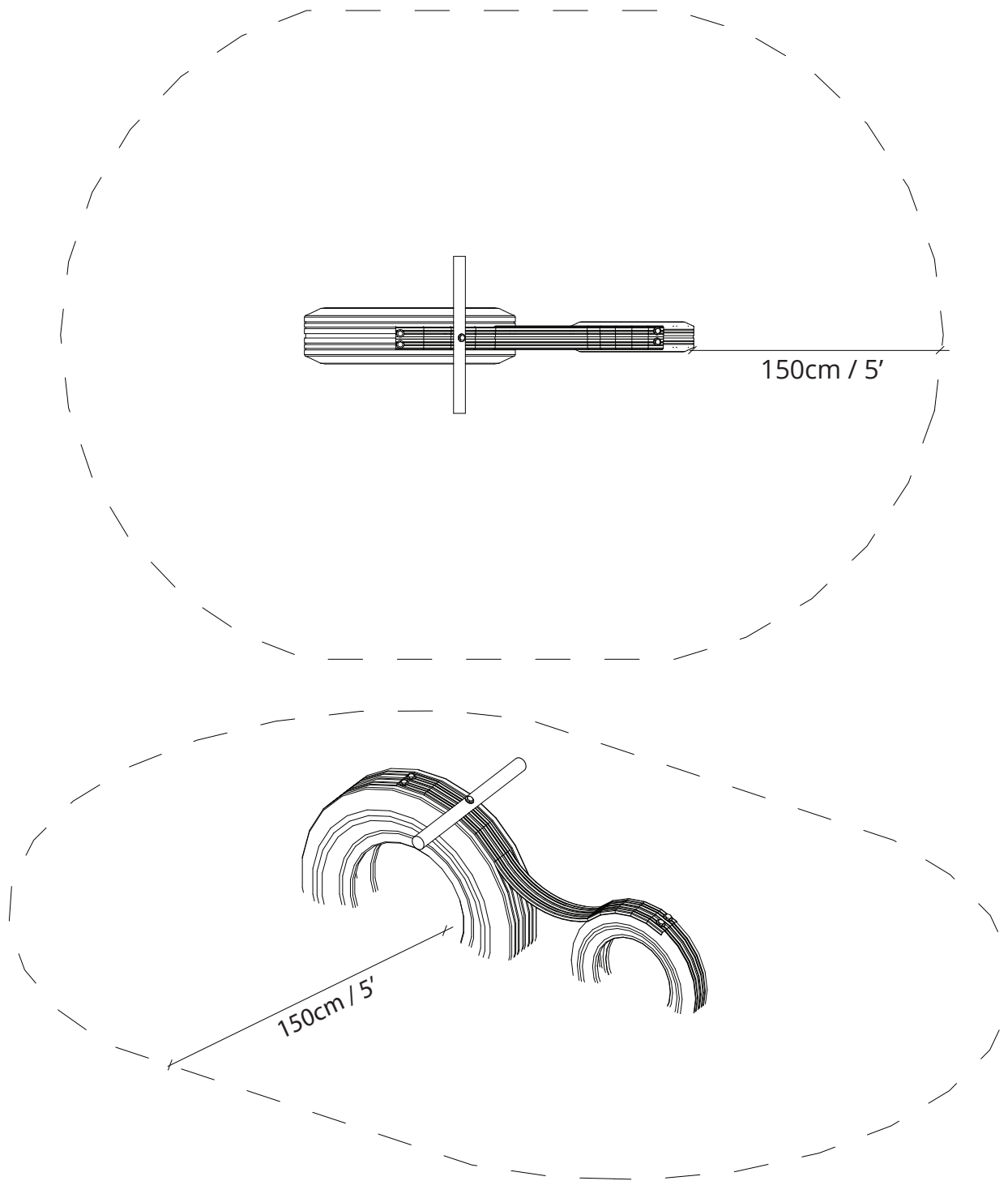
7.



Drill a hole through the timber post, tire tread, and truck tire below. Next, bolt the timber post and tire together with a hex bolt. Then, use a grinder to cut off excess bolt thread below the tire.

Please note, you may want to have a child test the position of the handlebar to make sure that the handlebar is at a comfortable height.

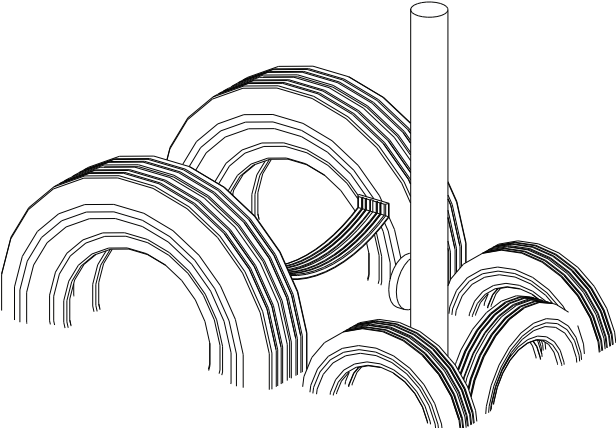




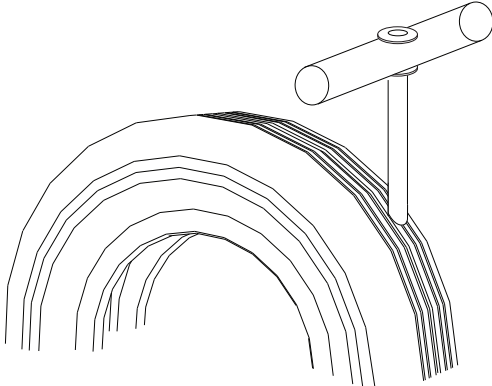
This element does not require soft fall material and can overlap with other elements. Please refer to the Playground Ideas Safety Handbook.



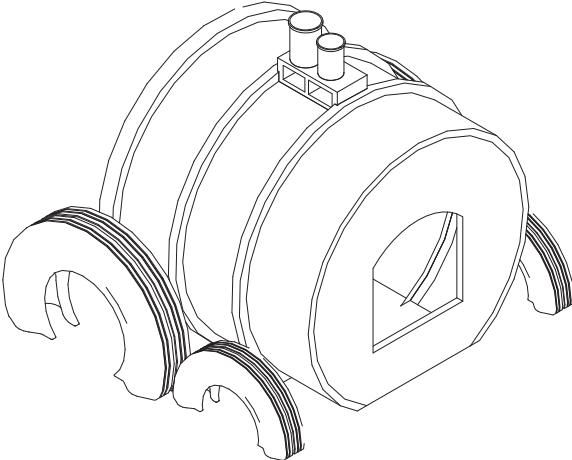
If you like this Motorbike, please check out these elements below as well:



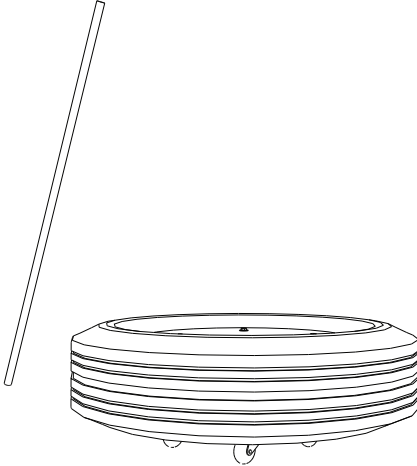
Mini Tractor



Mini Motorbike



Train



Bumper Car

